



6 Beenan Close Karawara, WA



## Want A Big Family Home? Go No Further!

Welcome to Aussie living at it's best. Think summer time, Sunday BBQ lunch by the pool, plenty of outdoor space for the kids to run and play, a huge park across the road for walking the dog and a quick 5 minute walk to school.

Features include:

- Large low maintenance fully reticulated backyard
- Year round alfresco entertaining with built in BBQ overlooking swimming pool
- Over-height double garage with enough room for any 4WD
- Spacious workshop with plenty of storage
- Ducted reverse cycle air conditioning throughout the home
- Large block of 734m2 situated in quiet cul-de-sac location
- Generous formal lounge
- Recent kitchen renovation with top quality European appliances

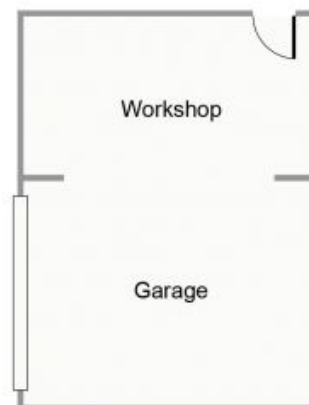
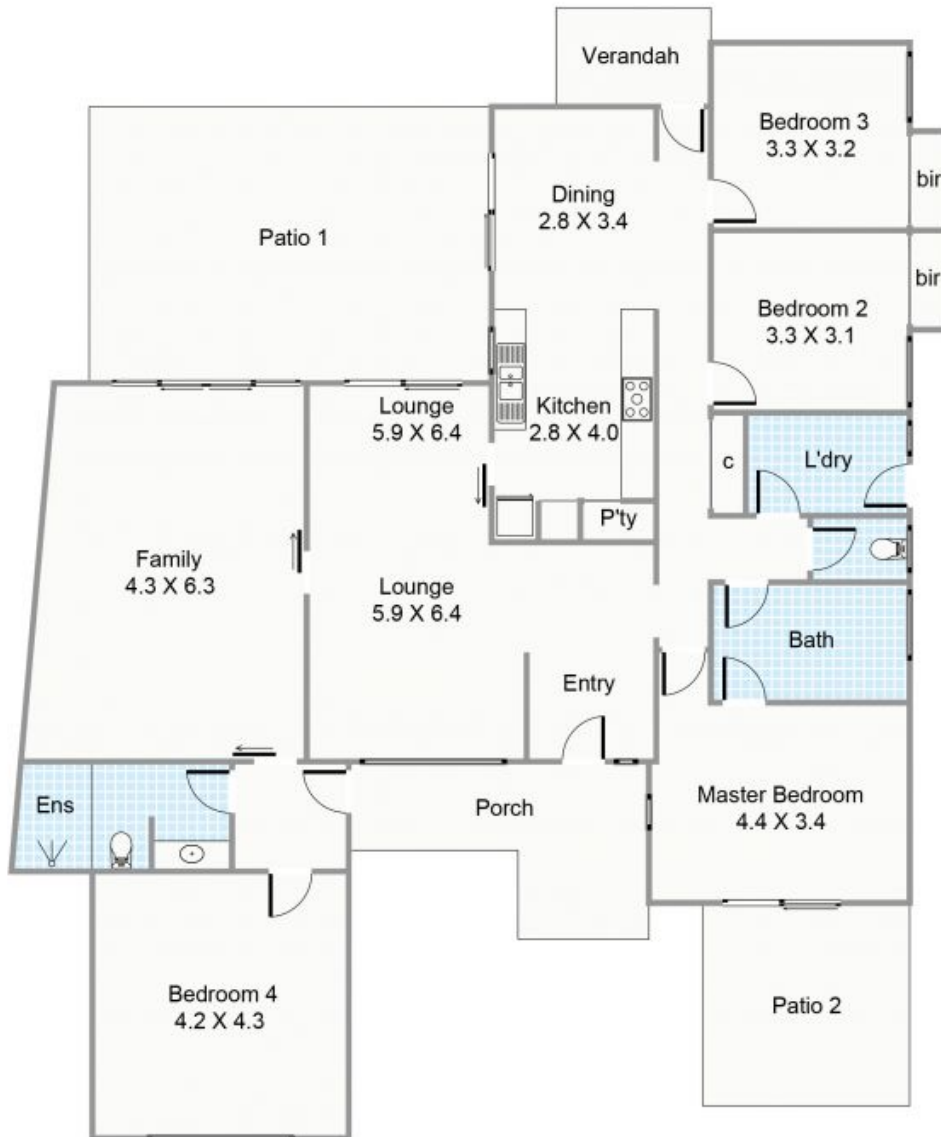
- 5

**Property Type:** House  
**Price:** Sold - \$707,000  
**Land size:** 734 Square Metres  
**Water rates:** \$1,334.00/year (approx)  
**Council Rates:** \$2,335.00/year (approx)



**Tony De Graaf**

Sales Executive  
 0406 320 938  
 tony@bourkes.com.au



Approximate Areas

Residence:	176.4m <sup>2</sup>
Patio 1:	32.3m <sup>2</sup>
Porch:	10.7m <sup>2</sup>
Patio 2:	12.2m <sup>2</sup>
Verandah:	4.4m <sup>2</sup>

Total Area: 236.0m<sup>2</sup>

All measurements are estimates  
All dimensions are in metres.  
Plans are for demonstration only.  
[www.cribcreative.com.au](http://www.cribcreative.com.au)



**6 Beenan Close, Karawara**