



51A Oats Street East Victoria Park, WA



## Secure & Convenient

UNDER OFFER, HOME OPEN CANCELLED

This spacious lock and leave home is ideal if you are downsizing or if you're looking to make your first property purchase. The home offers a spacious, light and bright open plan living / dining and kitchen which flows out onto your private courtyard.

And it is hard to match the convenience of this central location being within walking distance to restaurants, public transport, the local leisure centre, and only a short drive to both the Perth CBD and Curtin University.

Additional features include:

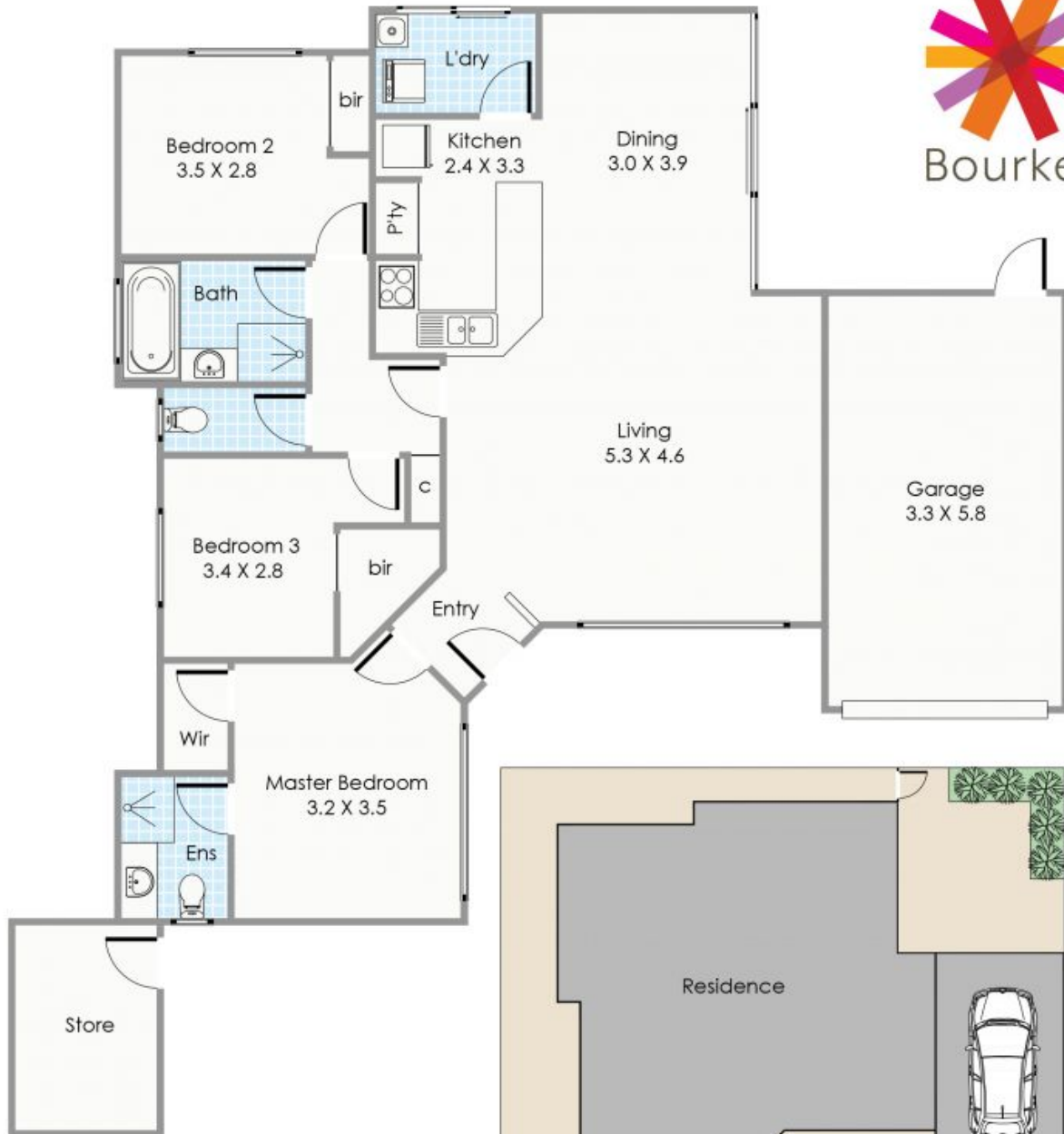
- Reverse cycle airconditioning to master suite and living room
- Gas hot water system
- Fully reticulated for your convenience
- Back to base monitored alarm
- Secure

**Property Type:** Semi Detached  
**Price:** Sold - \$440,000  
**Land size:** 338 Square Metres  
**Building size:** 137 Square Metres  
**Water rates:** \$982.00/year (approx)  
**Council Rates:** \$1,223.00/year (approx)



**Tony De Graaf**

Sales Executive  
 0406 320 938  
 tony@bourkes.com.au



Oats Street

Approximate Areas

Residence: 110.6m<sup>2</sup>  
 Garage: 20.1m<sup>2</sup>  
 Store: 6.3m<sup>2</sup>

Total internal: 137m<sup>2</sup>

Courtyards: 201m<sup>2</sup>

Total Strata: 338m<sup>2</sup>

All measurements are estimates  
 All dimensions are in metres.  
 Plans are for demonstration only.  
[www.cribcreative.com.au](http://www.cribcreative.com.au)



**51A Oats Street,  
 East Victoria Park**