



39 Northerly Avenue Ascot, WA



## Price Reduced. Unbeatable Value On Offer!

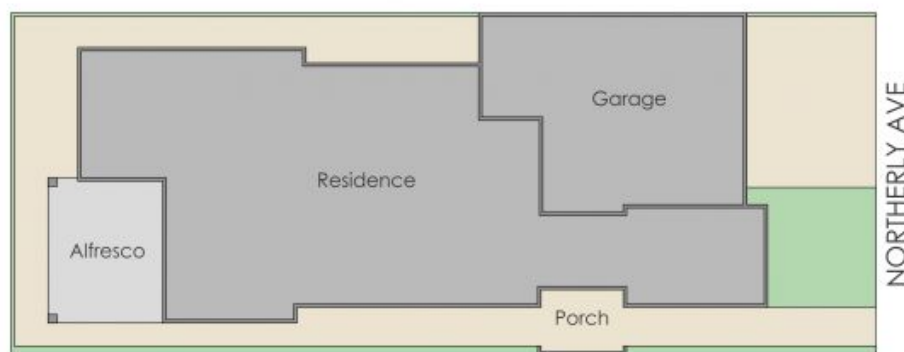
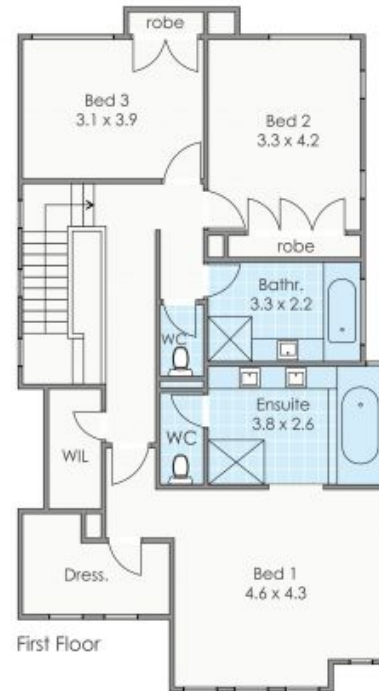
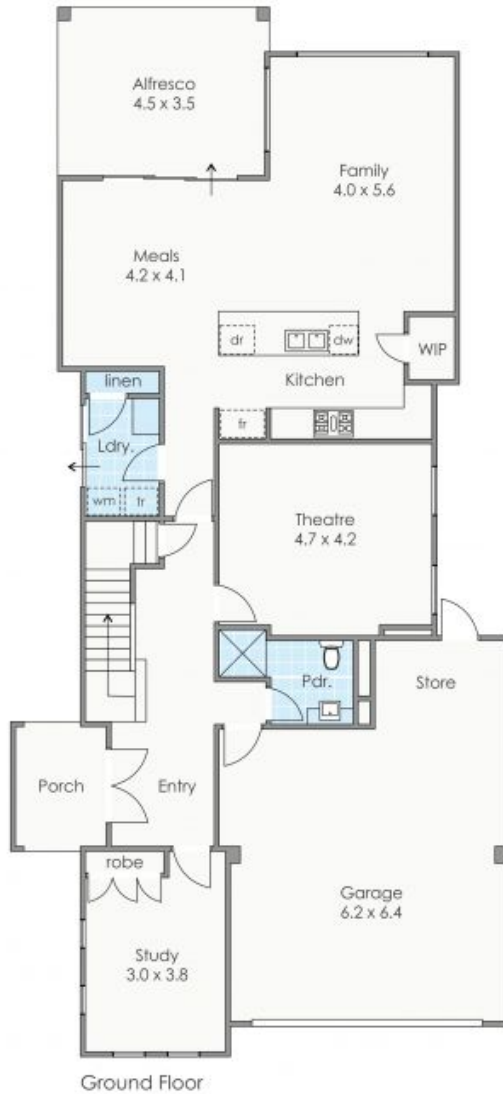
One inspection of this high quality, executive family home, master-built by award-winning Beaumonde Homes to a detailed and demanding specification, will leave you wondering why life wasn't always this good.

The seeming contradiction of living just minutes from the hustle of Perth's CBD, yet with the serenity of its whisper quiet position in the exclusive 'Ascot Vale Estate', is just one of the many surprises this home has in store for the fortunate buyer. Less than 5 minutes will find you on the tarmac at Perth International and Domestic Airport, in the pool or playing the tables at Crown or on the freeway heading south to Mandurah or Margaret River. This is the ultimate lifestyle

**Property Type:** House  
**Price:** Sold - \$760,000  
**Land size:** 306 Square Metres  
**Building size:** 315 Square Metres  
**Water rates:** \$2,227.00/year (approx)  
**Council Rates:** \$1,373.00/year (approx)



**James Thompson**  
Senior Sales Executive  
0421 677 856  
james@bourkes.com.au



Approximate Areas

Ground floor:	134m <sup>2</sup>
First floor:	112m <sup>2</sup>
Alfresco:	16m <sup>2</sup>
Garage/Store:	48m <sup>2</sup>
Porch:	6m <sup>2</sup>
Total area:	204m <sup>2</sup>

These plans have been produced for marketing purposes and are approximate only. They are not suitable for other uses.  
[www.cribcreative.com.au](http://www.cribcreative.com.au)



**39 Northerly Avenue, Ascot**