



9 Arreton Close Willetton, WA



Under Contract - Home Open Cancelled!

Splash into summer, in this original and neat family home. The versatile floor plan with large living spaces and outdoor entertaining zones, makes this the ideal choice for growing families looking for a prime location and an opportunity to add value.

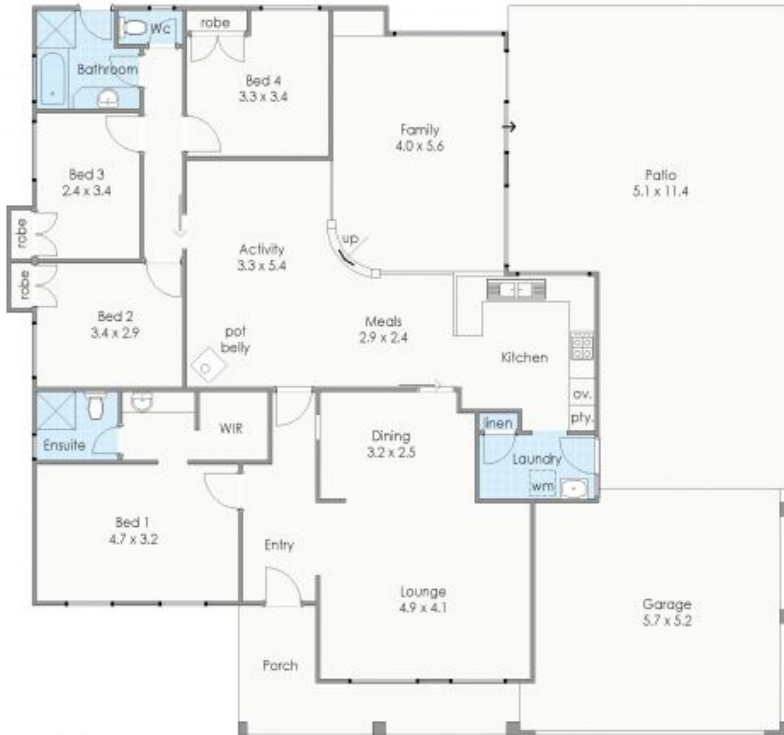
Nestled on a 700m2 Green Title block in a sought after cul de sac, a short stroll to local shops and schools. Viewing is a must!

- ? Huge open plan dining and family with fireplace
- ? Formal front north facing lounge room
- ? Light filled kitchen with breakfast bar
- ? Large master bedroom with walk-in robe and ensuite
- ? Secondary bedrooms with built-in robes
- ? Undercover outdoor alfresco for entertaining all year round.
- ? Sparkling below

Property Type: House
Price: Sold - \$640,000
Land size: 700 Square Metres
Water rates: \$1,426.00/year (approx)
Council Rates: \$1,947.00/year (approx)



Kathryn Perin
 Sales Executive
 0405 709 763
 kathryn@bourkes.com.au



Approximate Areas

Residence:	185m ²
Garage:	34m ²
Patios:	77m ²
Porch:	11m ²
Total area:	307m ²

These plans have been produced for marketing purposes and are approximate only. They are not suitable for other uses. www.cribcreative.com.au



ARRETON CLOSE

9 Arreton Close, Willeton