



202/4-6 Doepel Street North Fremantle, WA



It's All About Leisure In This Lifestyle Location!

An enviable lifestyle awaits the fortunate buyer of this spacious, stylish and secure apartment in a quiet riverside pocket where neither a coffee nor the price, is out of reach!

Boasting 79m² of light-filled, open plan leisure and living space which spills out onto the private, undercover entertainer's terrace amongst the leafy green street trees.

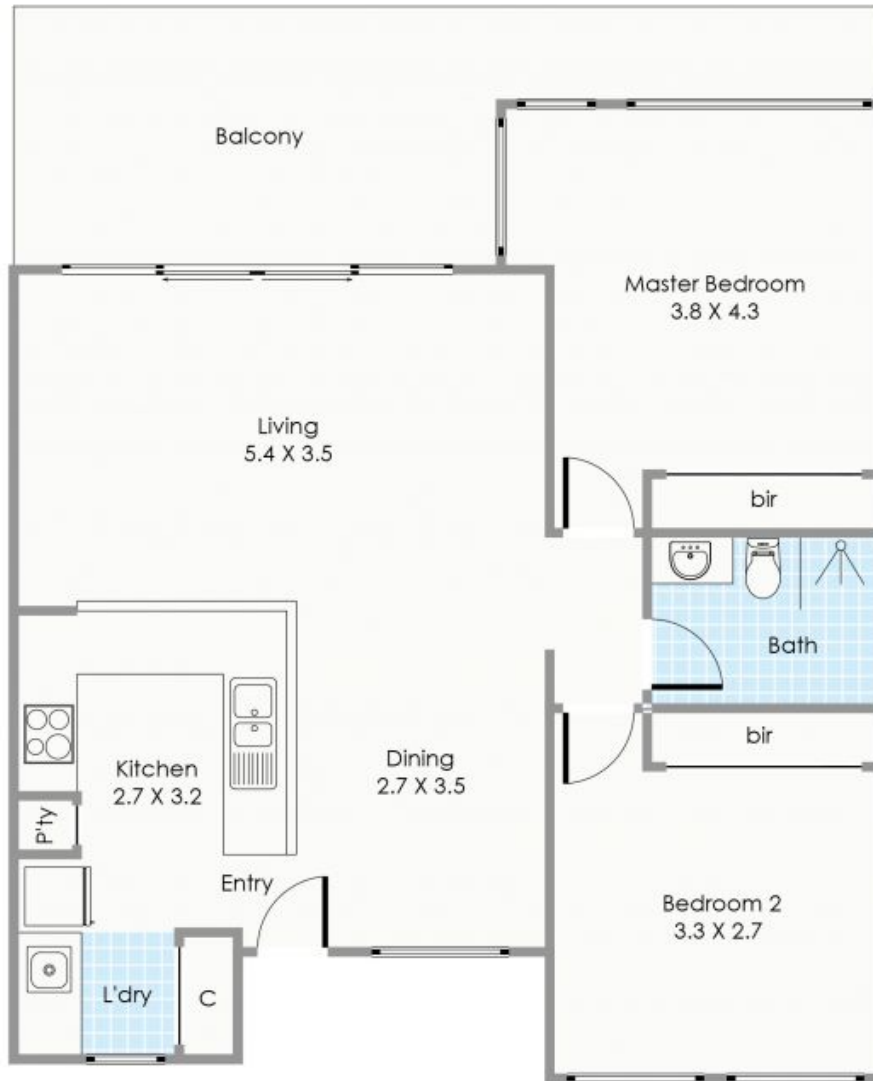
When it's time to retire for the day, there are two generous bedrooms, both with built-in robes and serviced by a stylish, fully renovated bathroom featuring full-height tiling and quality European fixtures. The king-size master suite also has direct access to the balcony.

Situated on the first floor of the iconic 'The Brighton' development,

Property Type: Apartment
Price: FROM \$499,000
Building size: 79 Square Metres
Water rates: \$1,116.00/year (approx)
Levies: \$1,035.00 p/q
Council Rates: \$2,052.00/year (approx)



James Thompson
 Senior Sales Executive
 0421 677 856
 james@bourkes.com.au



Approximate Areas

Internal:	79m ²
Balcony:	19m ²
Carbay:	14m ²
Store:	4m ²
Total Area:	116m²

All measurements are estimates
 All dimensions are in metres.
 Plans are for demonstration only.
www.cribcreative.com.au



**202/4-6 Doepel Street,
 North Fremantle**